

MEMORIAL GARDENS

SECTION R

- NORTH - LAST SUPPER
- C - INGROUND CEMATION BURIAL GARDEN
- SOUTH - GOOD SHEPHERD
- EAST - LORD'S PRAYER
- WEST - GETHSEMANE

SECTION P

- SOUTH - SONGBIRD SANCTUARY

SECTION B

- SOUTHWEST CORNER - INFANT AREA
- NORTH - VETERANS GARDEN
- SOUTH - CATHOLIC GARDEN OF THE RESURRECTION
- EAST - CATHOLIC GARDEON OF THE ASCENSION

SECTION I

- TOP - GARDEN OF THE OLD RUGGED CROSS
- NORTHWEST - EGYPTIAN COPTIC AREA

SECTION K

- NORTH - GARDEN OF FAITH
- SOUTH - MACEDONIAN AREA

SECTION M

MUSLIM AREA

SECTION R

- SOUTHEAST - TRIANGLE-COLUMBARIUMS

SECTION C

- SE CORNER - COLUMBARIUMS

SECTION F

- GARDEN MAUSOLEUMS

CLARENDON HILLS CEMETERY

"Serenely Beautiful"

6900 S. Cass Avenue
 Darien, Illinois 60561
 (630) 968-6590

Office Hours:
 Monday – Saturday
 8:30 a.m. – 4:30 p.m.

RULES AND REGULATIONS

The following rules and regulations of Clarendon Hills Cemetery shall govern memorialization, decorations, and grave services performed by the Cemetery for Lot Owners.

MEMORIALIZATION

Clarendon Hills Cemetery is one of the first cemeteries in the area to be developed with the park lawn type sections using only flush markers, which results in the beautiful garden-like sections. Throughout the cemetery the Board of Directors has established certain rules and regulations governing memorialization in order to preserve the appearance of Clarendon Hills Cemetery when each and every lot has a memorial placed on it.

Approximately one-half of the Cemetery is restricted to flush bronze memorials, while lot owners are allowed to erect an above ground monument in the second half. These large upright memorials, usually composed of two pieces of granite are termed monuments, there being only one monument allowed centered on each family lot. Each monument lot must be comprised of a minimum of at least 4 graves. No monument may be placed any closer than 40 feet from the drives on lots with existing pathways. When a monument is placed on a lot, all the other memorials on the lot must be lawn level bronze memorials or matching granite memorials. All memorial gardens and traditional areas are restricted to lawn level bronze memorials only. Any future memorials must match existing memorials already placed on lots with the exception of bevel granite markers, which are no longer allowed. These must be matched in design and granite with future lawn level memorials.

It is not necessary at Clarendon Hills Cemetery to wait for the ground to settle after an interment before ordering a memorial. The reason is that most lots at Clarendon Hills Cemetery are long enough so that the ground is not disturbed where the memorial will be placed.

Please know we are here to help you honor the memories of your loved one with memorialization and encourage lot owners to work with their cemetery when selecting a memorial. This avoids time delays, costly errors and any disappointments.

No statuary, ceramic photos or southern granite are permitted.

DECORATIONS

During the winter months the cemetery is more liberal in regard to decorations, which may be placed on lots by lot owners. However, during the growing season, approximately March through October, the cemetery finds it necessary to have additional regulations for maintenance and safety purposes which must be strictly adhered to. During the spring and fall the cemetery sets aside one week in which all winter and summer decorations are removed from the lots. This week is determined by weather conditions and a notification thereof will be posted in the window of the cemetery office three to four weeks in advance. All summer or winter decorations must be removed from lots before dates posted if lot owners wish to keep these items. The cemetery cannot be responsible for decorations left on lots during dates posted. Please do not ask the cemetery to make exceptions.

GROWING SEASON – (March thru October)

1. A complete line of approved cemetery receptacles are available at the office and range from economy priced receptacles to solid bronze urns. We also provide shepherd hooks and hanging baskets of silk flowers.
2. Decorations that have become withered, unsightly, or over sized (infringing beyond the lot line) will be removed to benefit adjoining lot owners and to preserve the appearance of the cemetery.
3. However attractive they are, no plantings are allowed. You are not well-served by any permanent decoration that hinders our maintenance or burial services.

4. Please refrain from cutting or fertilizing lawns, as your well-intentioned help is in conflict with regular cemetery maintenance.
5. Please do not place decorative stones, lanterns, candles, metal, glass, plastic or pottery containers on your lots, as they present a hazard, which could result in injury to employees or damage to our mowers.
6. Please refrain from placing more than two (2) decorations on a grave. Make arrangements amongst yourselves so only two decorations are placed at any present time. Beauty exists in quality – not quantity.
7. Growing Season Decorations shall consist of cut flowers and artificial flowers permitted in regular cemetery vases. Not permitted are all types of wreaths and any decoration on a stand or easel or other type container. This includes Mom and Dad easels and stands. The above rule will be strictly enforced.
8. Flags are allowed on Memorial Day, Independence Day and Veteran's Day but will be removed the first Monday after the holiday.
9. No animals are allowed on cemetery grounds.
10. We regret that we cannot guarantee decorations from damage or disappearance. Thousands of people visit the cemetery and it is very difficult to control the activity of every visitor.
11. Clean up for removal of decorations for this period is October 1st.

HANGING FLORAL BASKETS ON SHEPHERD HOOKS

Lot owners may order a beautiful floral basket on a shepherd hook from the cemetery by having us place you on our mailing list and returning the brochure you receive in the mail. The baskets are also on display in the office and are available for you to select or place on the gravesite.

The shepherd hooks are loaned to the purchaser and remain the property of the cemetery.

NON-GROWING SEASON NOVEMBER THRU MARCH

During the non-growing season artificial flowers, fresh flowers and various other decorations and receptacles of non-breakable nature will be allowed to be placed on lots. Clean up for removal of decorations for this period is March 1st.

Evergreen Blankets and Wreaths

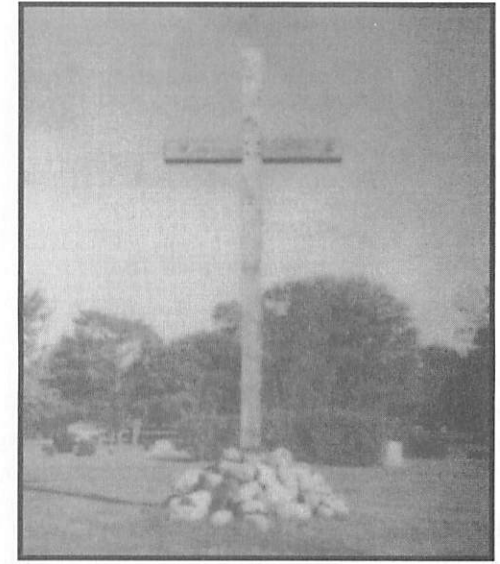
In early fall lot owners will receive a brochure from the cemetery if they would like winter decorations placed on their lots. These will consist of evergreen bough blankets and wreaths of various sizes and shapes. By placing the winter decorations on the graves of loved ones color is introduced into the cemetery, and the beauty of the lot is enhanced. Lot owners desiring winter decorations to be placed on their lots may pick up a form at the office where the decorations will be on display or return the form to the cemetery which they receive through the mail.

MAUSOLEUMS AND GARDEN NICHES

Please do not tape decorations to crypt fronts. The placement of flowers or any other decorations on crypt fronts could damage the polished finish and are not permitted. Because of the potential damage these violations cause, they will be removed immediately without replacement. Vases and hanging baskets are available for in ground installation in front of crypts.

- Information on lots, grave locations, memorials, grave decorations, or vases is available at the office.
- If there is any question in regard to the placement of decorations or other items on your lot, please contact the office first.
- Any indebtedness or payments in default, due to Clarendon Hills Cemetery must be paid in full before an interment can be made on a lot.
- These rules and regulations are subject to change and your cooperation and compliance with them will help to keep your cemetery continually "Serenely

Rules & Regulations for CLARENDON HILLS CEMETERY



"Serenely Beautiful"

6900 S. Cass Avenue
Darien, Illinois 60561
(630) 968-6590

Office Hours:
Monday – Saturday
8:30 a.m. – 4:30 p.m.